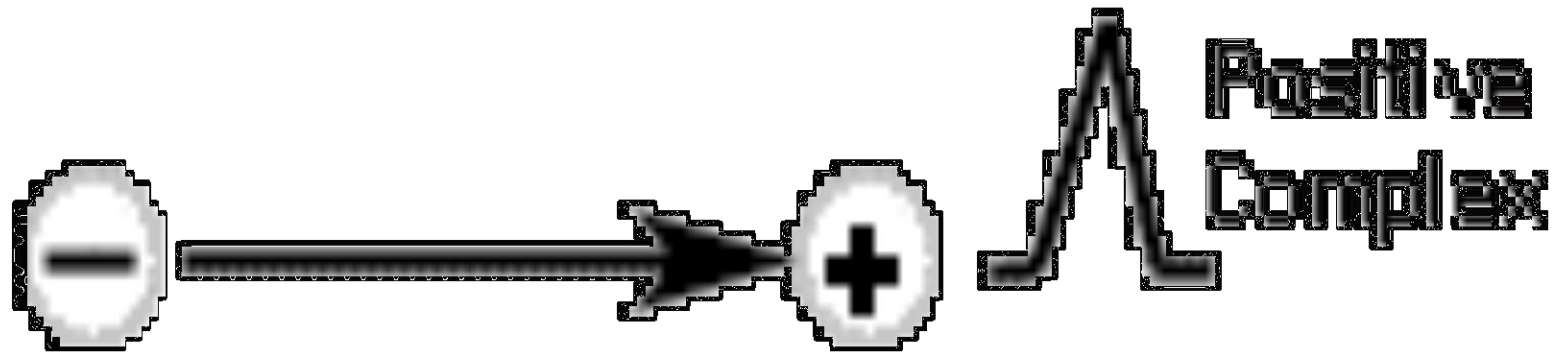
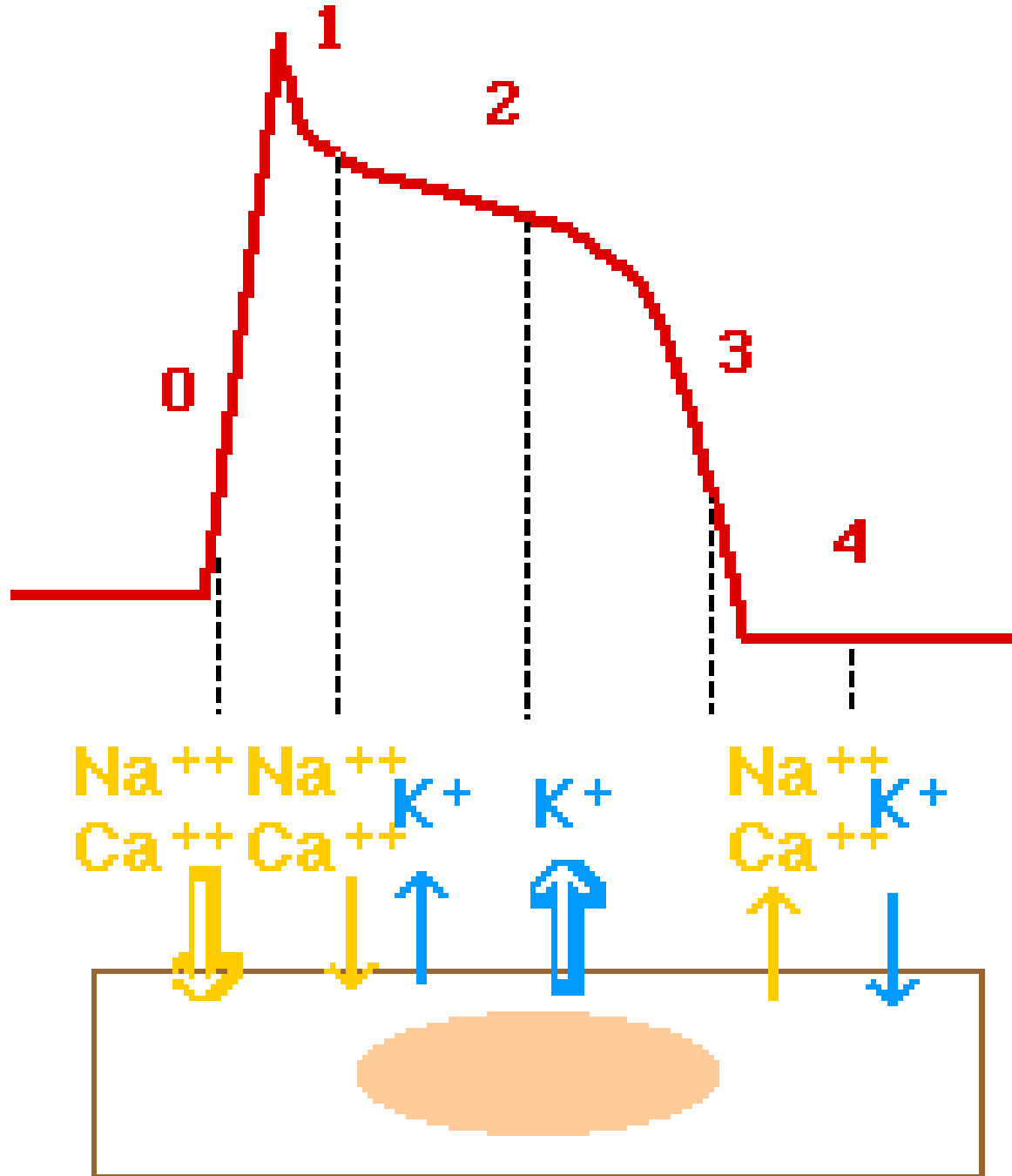


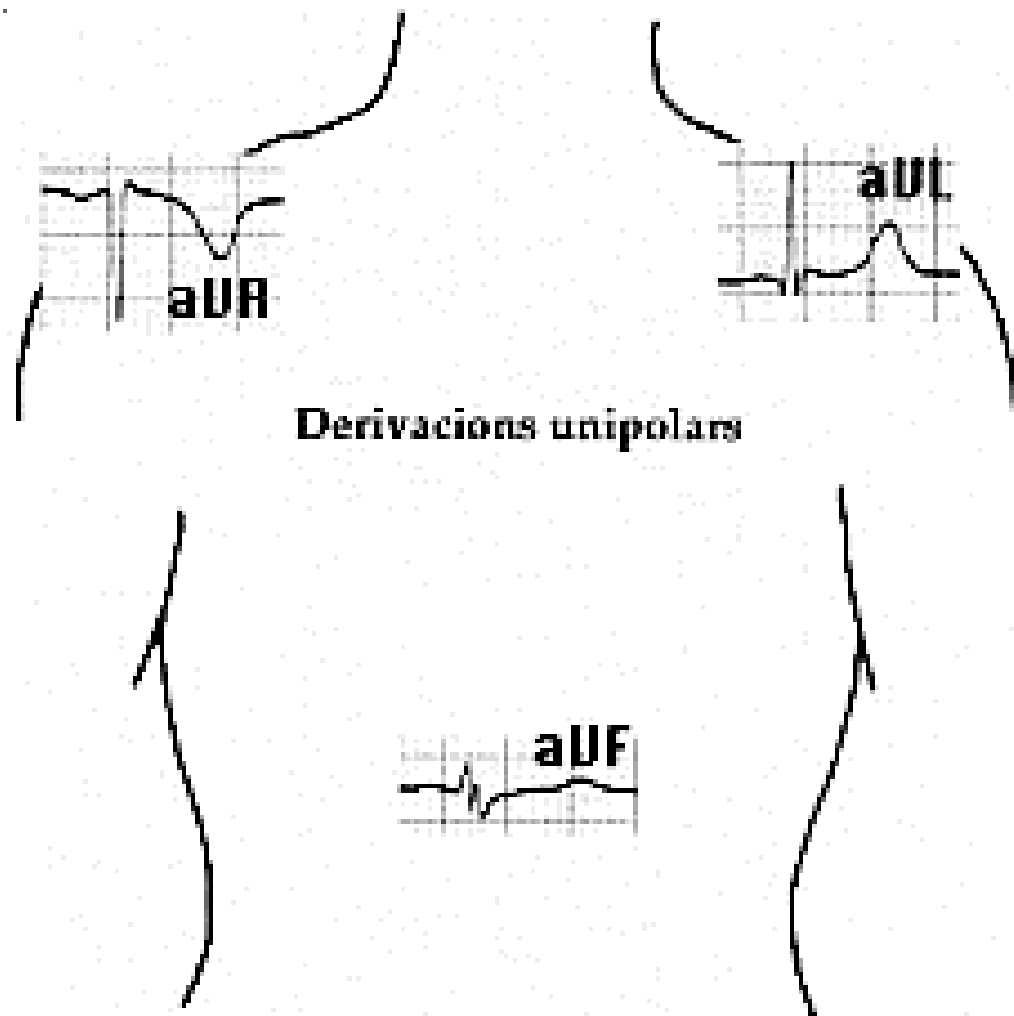
VECTORES ELECTRICOS

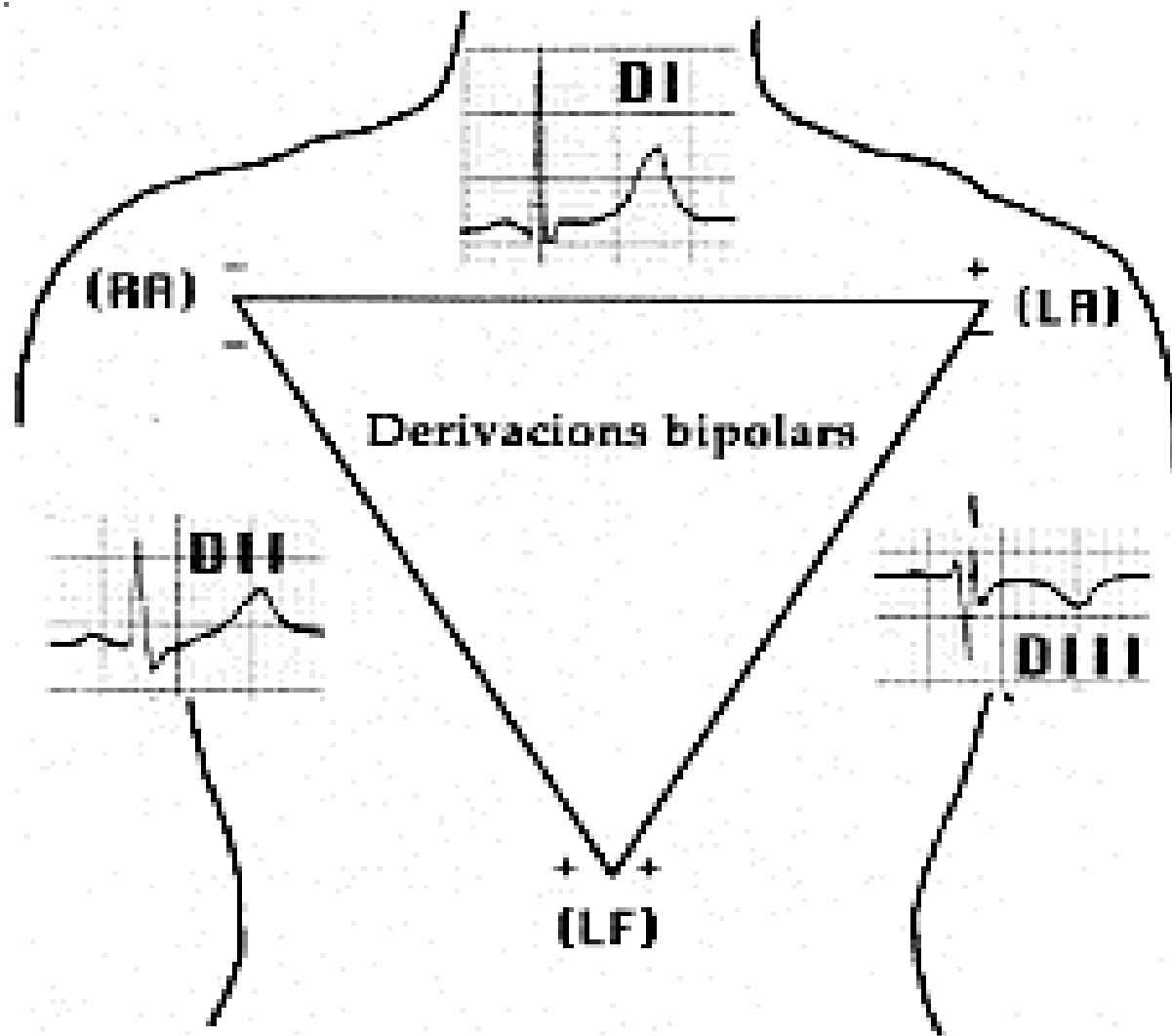


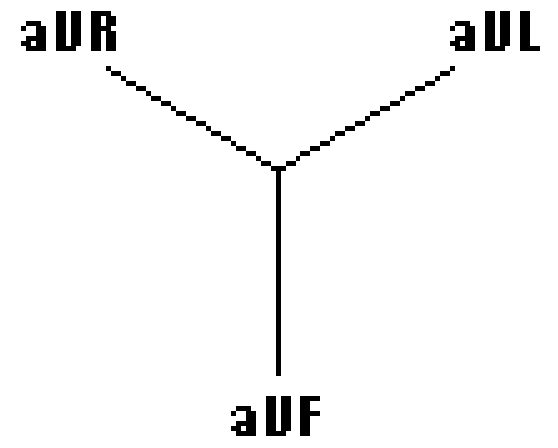
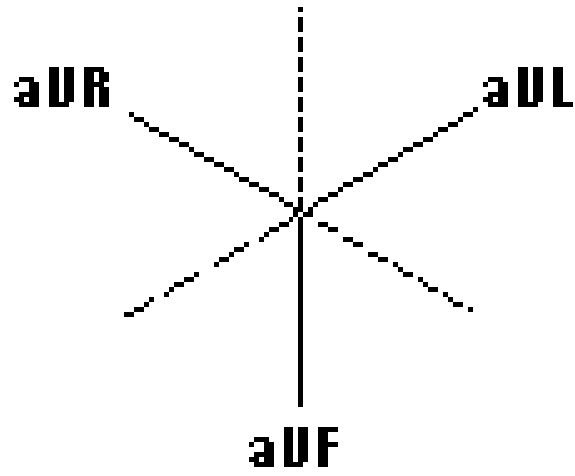
Depolarisation wave

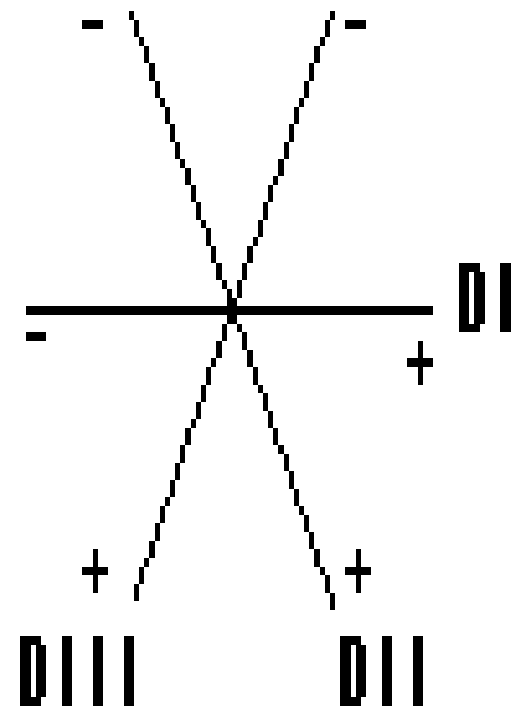
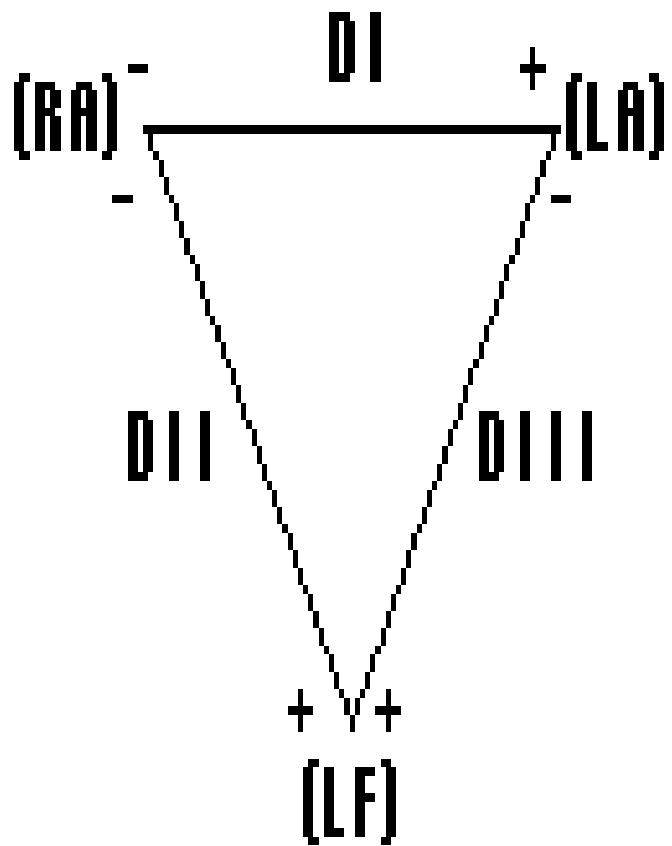


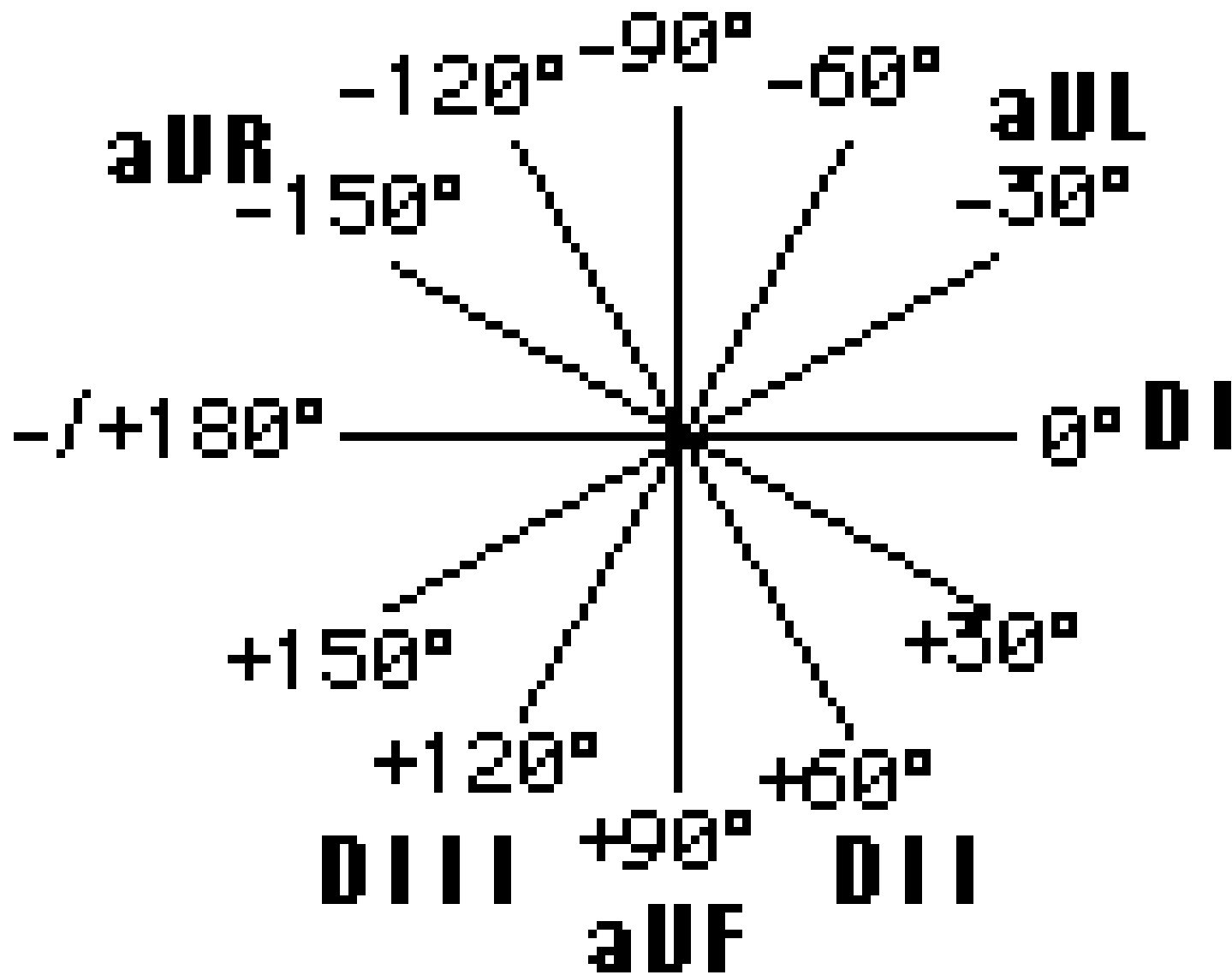


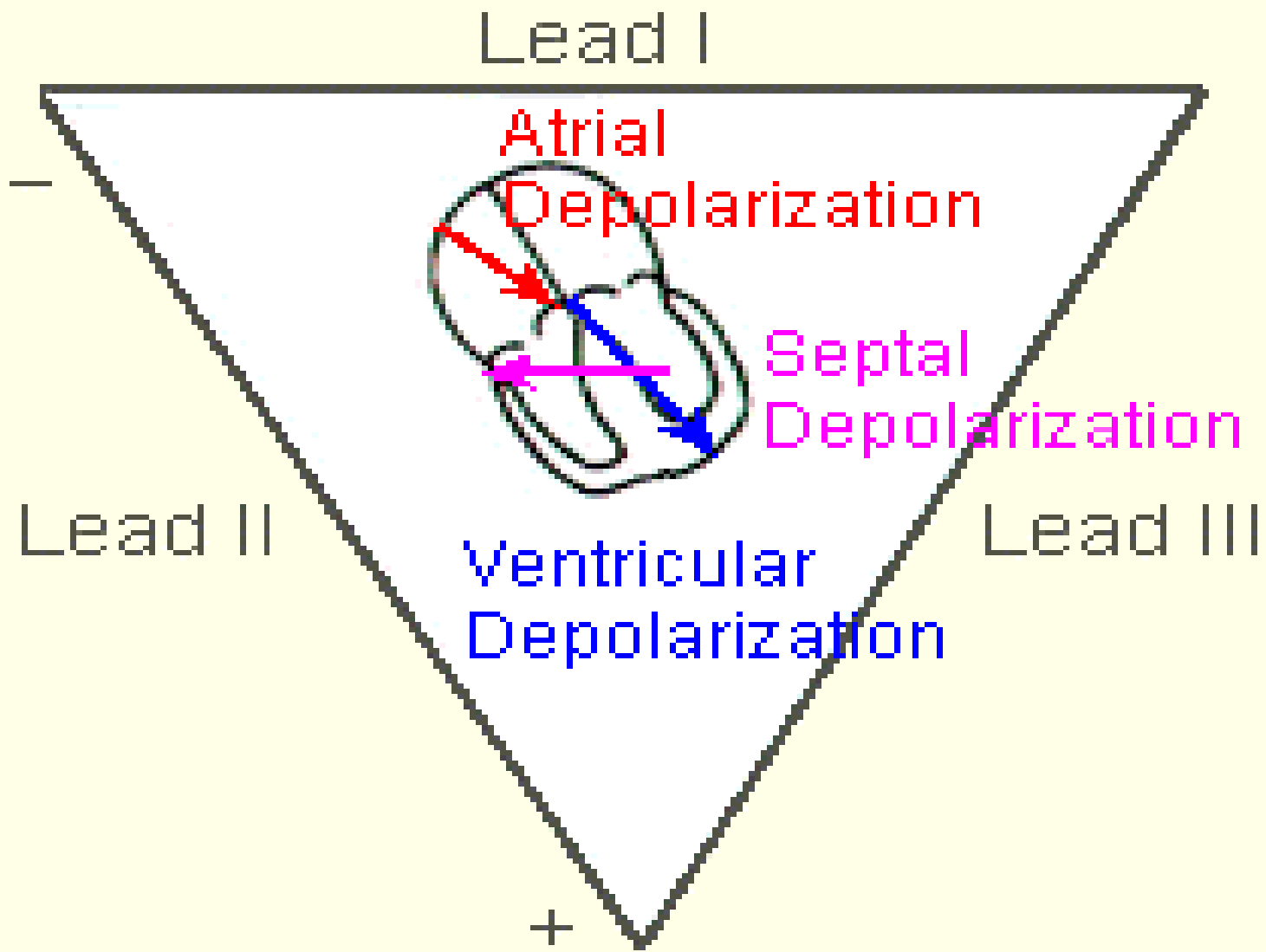


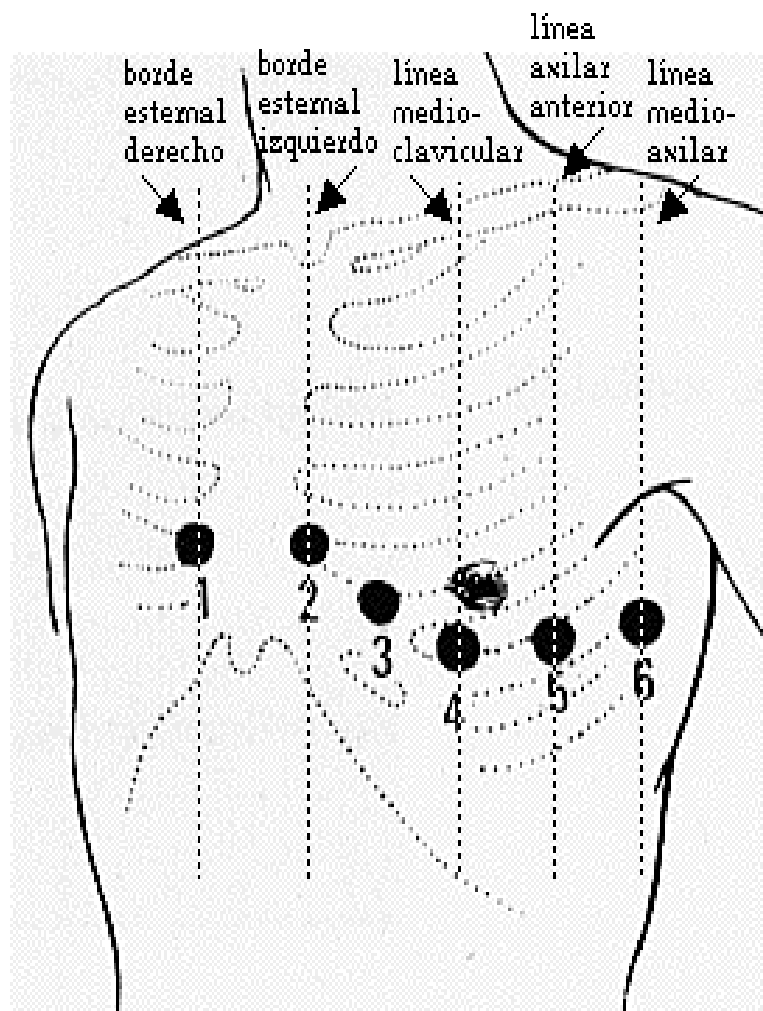






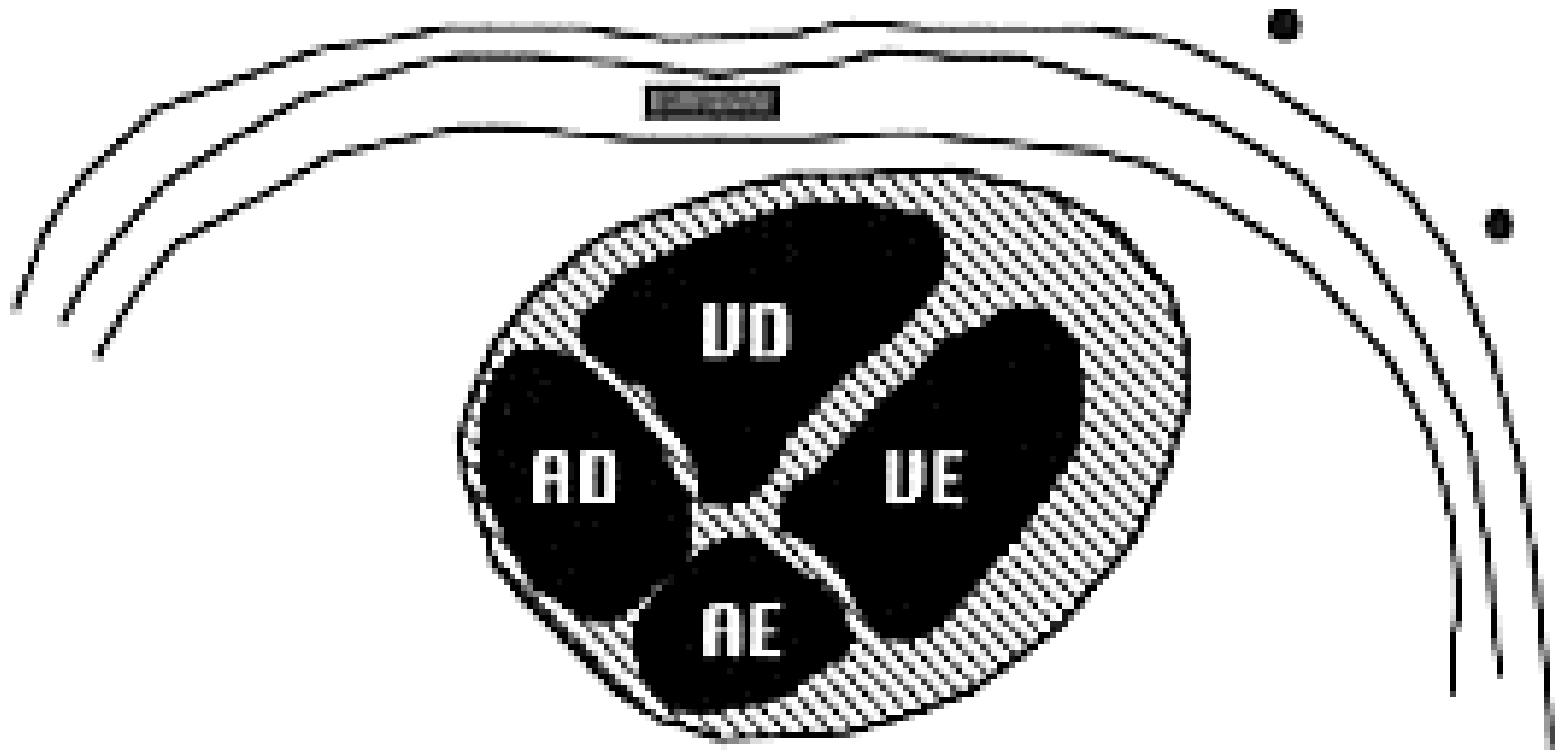
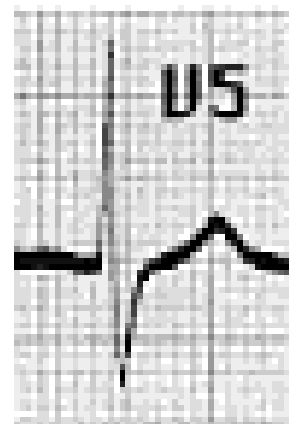






Posición de los electrodos precordiales

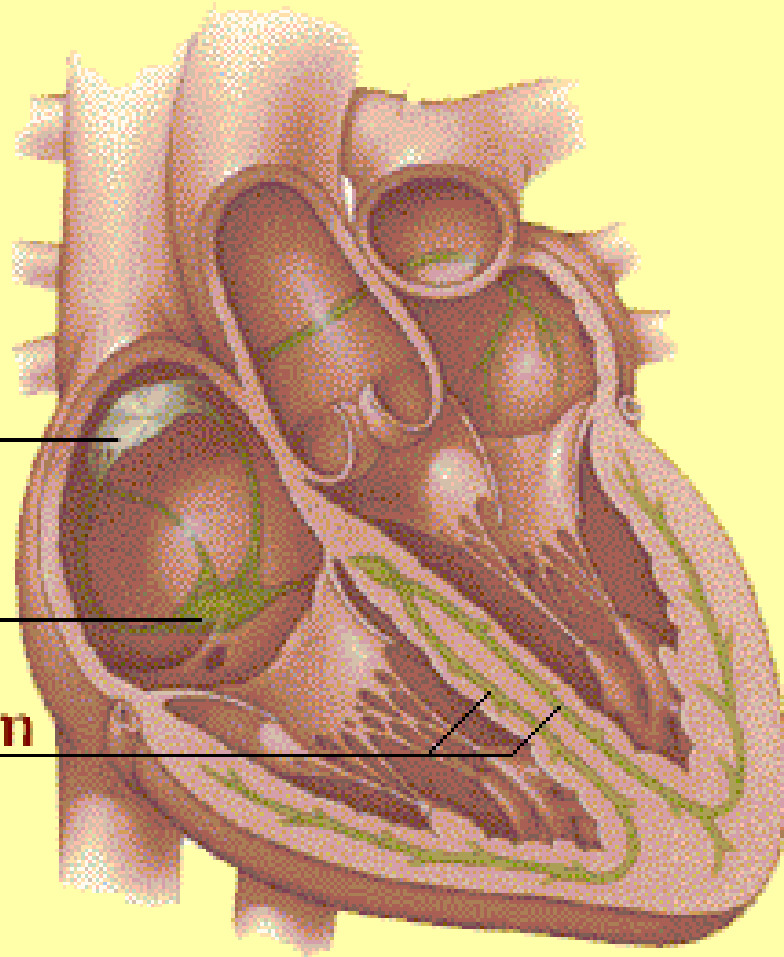
- V1: 4º espacio intercostal, borde esternal derecho
- V2: 4º espacio intercostal, borde esternal izquierdo
- V3: punto equidistante entre V2 y V4
- V4: 5º espacio intercostal izquierdo, línea medioclavicular
- V5: línea axilar anterior, mismo nivel que V4
- V6: línea medioaxilar, mismo nivel que V4



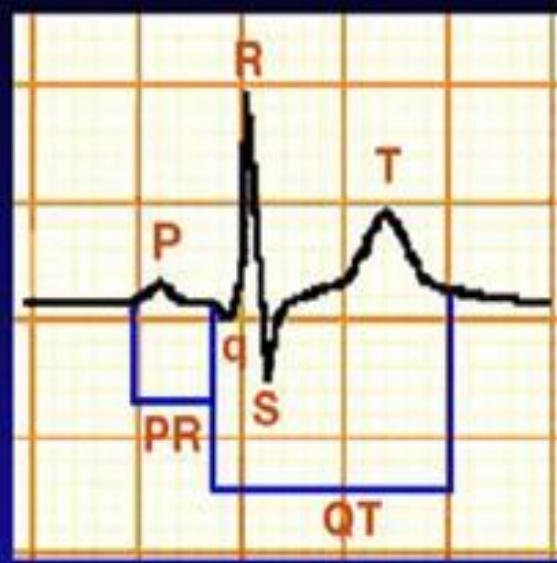
Sinus Node

Atrioventricular
Node

His-Purkinje System



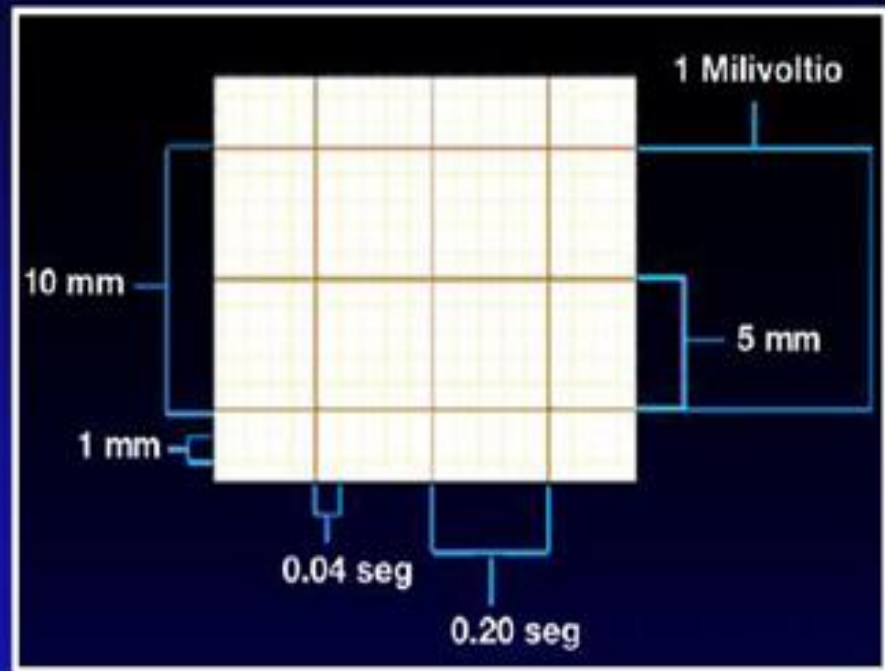
EL ELECTROCARDIÓGRAFO. CARACTERÍSTICAS

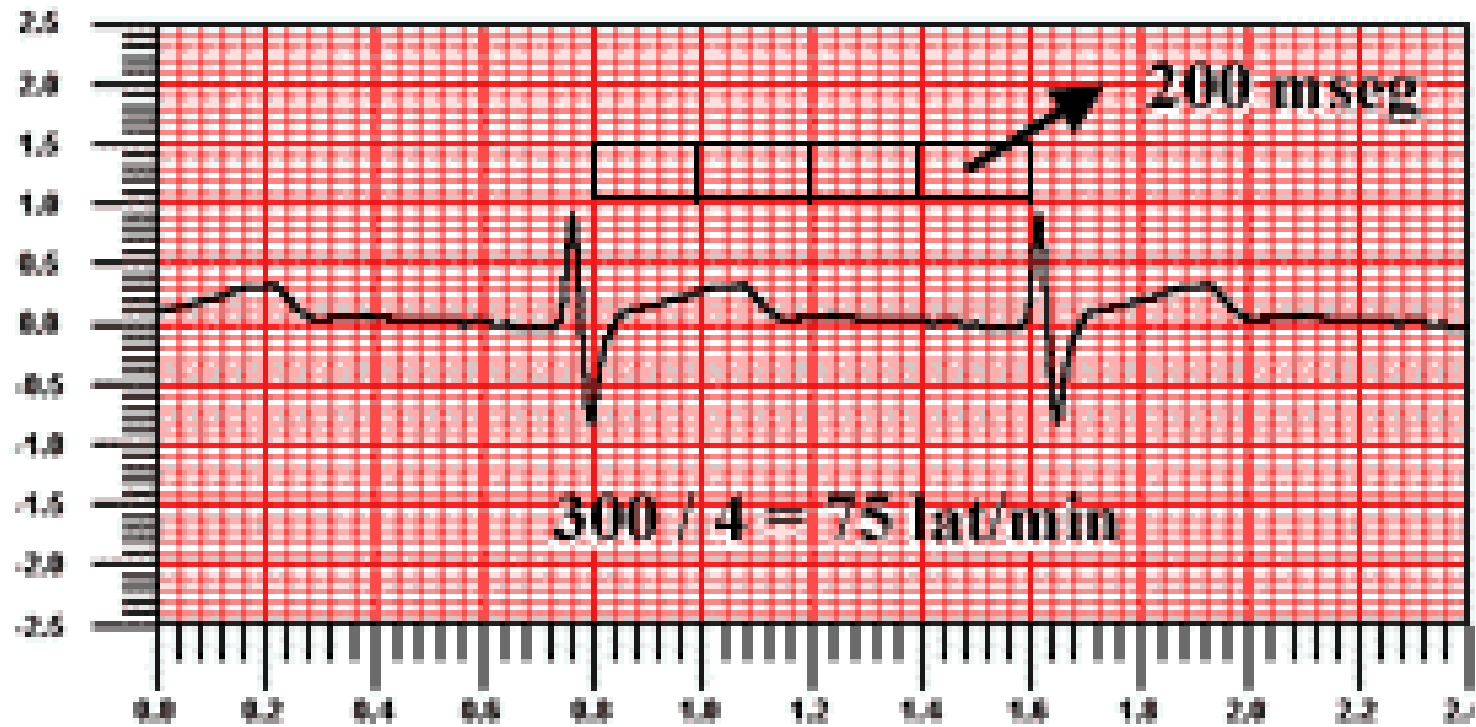


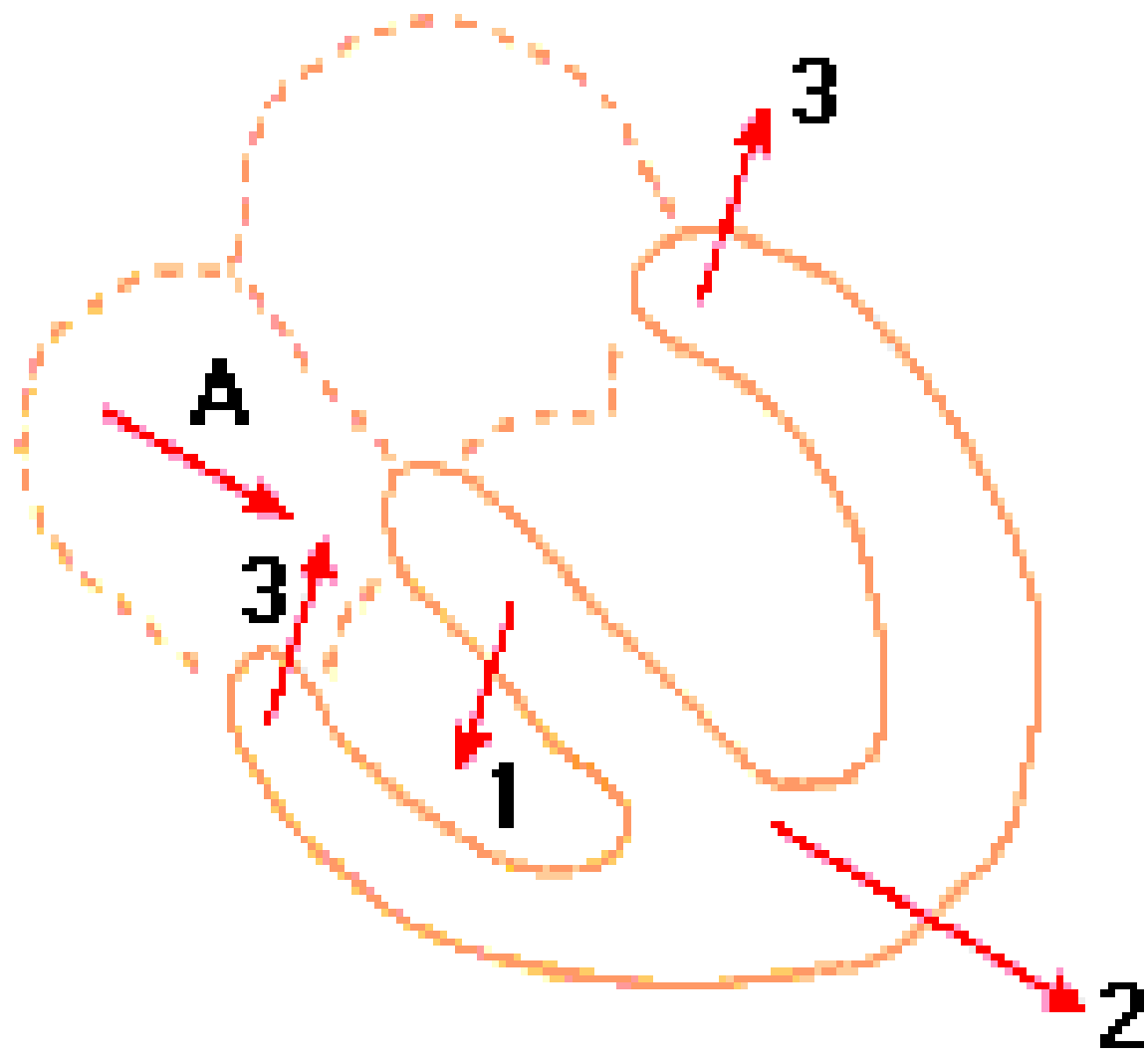
Intervalo PR 0.12 - 0.20 seg

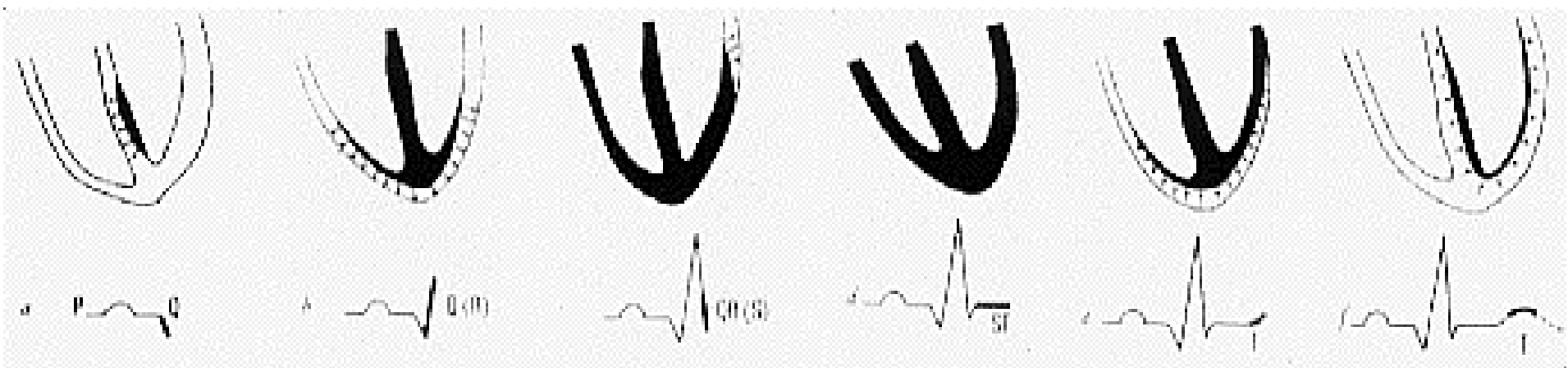
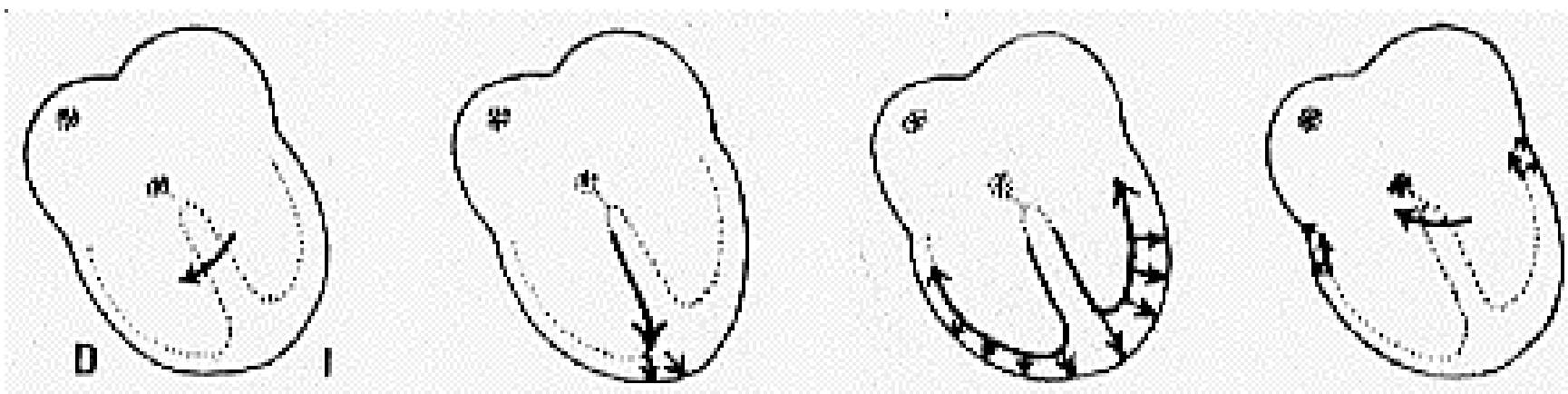
Intervalo QRS < 0.12 seg

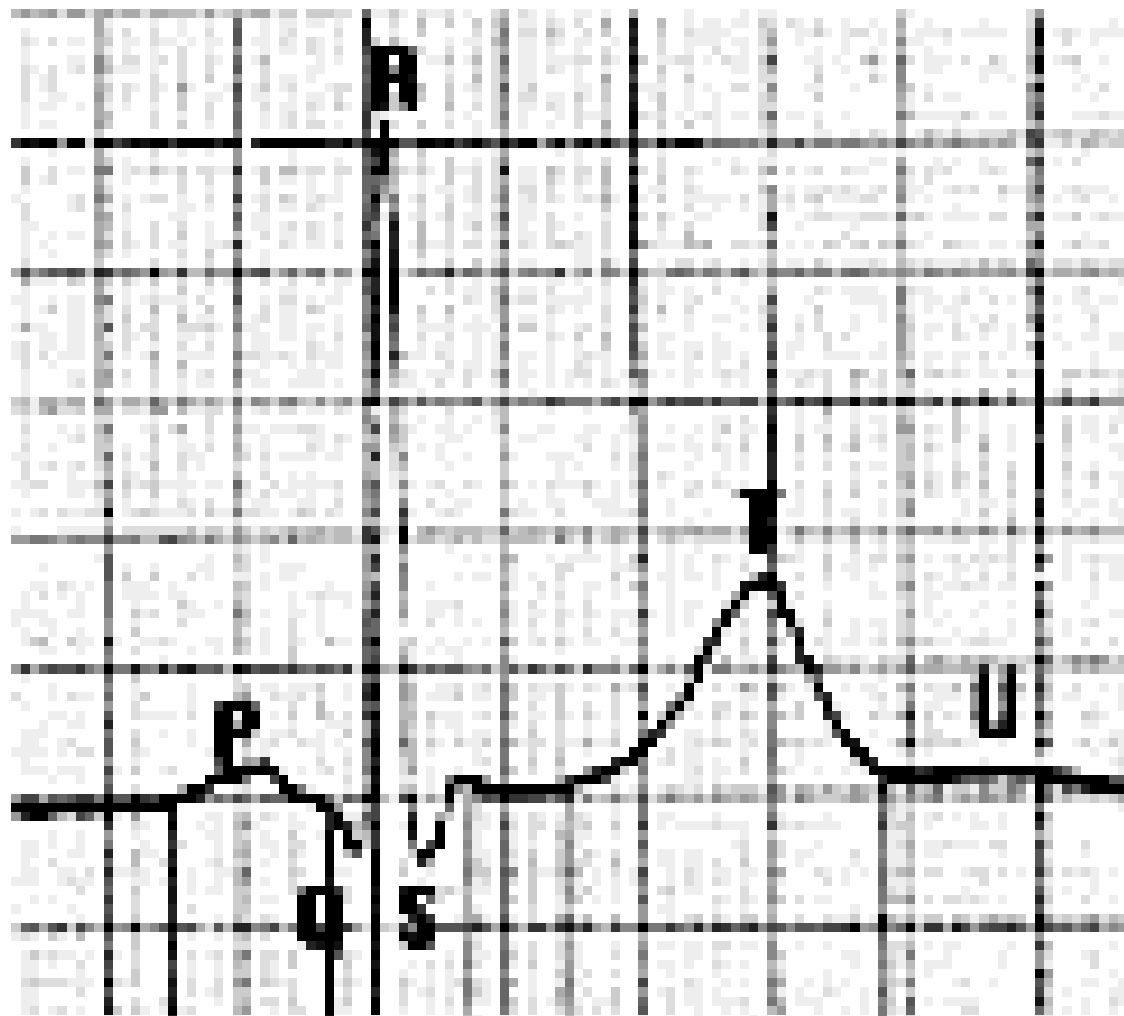
- P:** onda de despolarización auricular (amplitud < 0.2 mv duración < 0.12 seg)
- QRS:** complejo de despolarización ventricular
- Q:** se denomina a la reflexión negativa que inicia el QRS
- R:** se denomina a toda reflexión positiva del QRS
- S:** se denomina a la reflexión negativa que sigue a una positiva
- T:** onda de repolarización ventricular











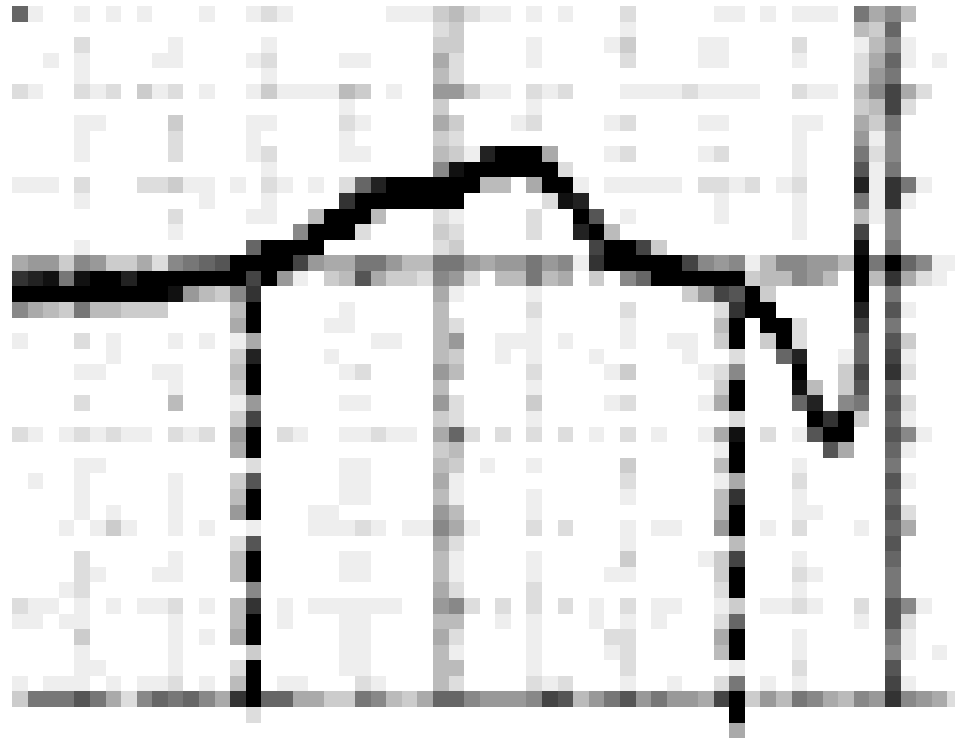
Ondas

Segmento

Intervalos

PR

QT

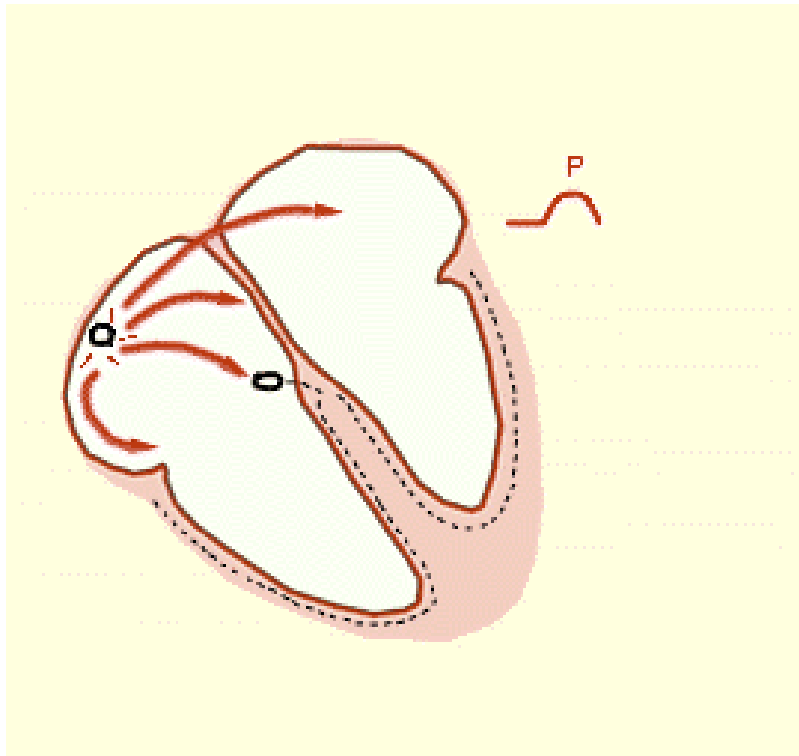


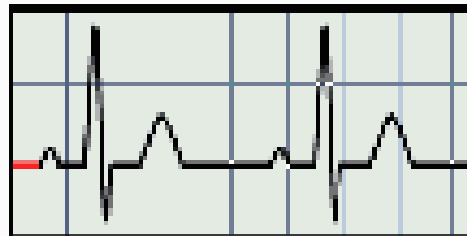
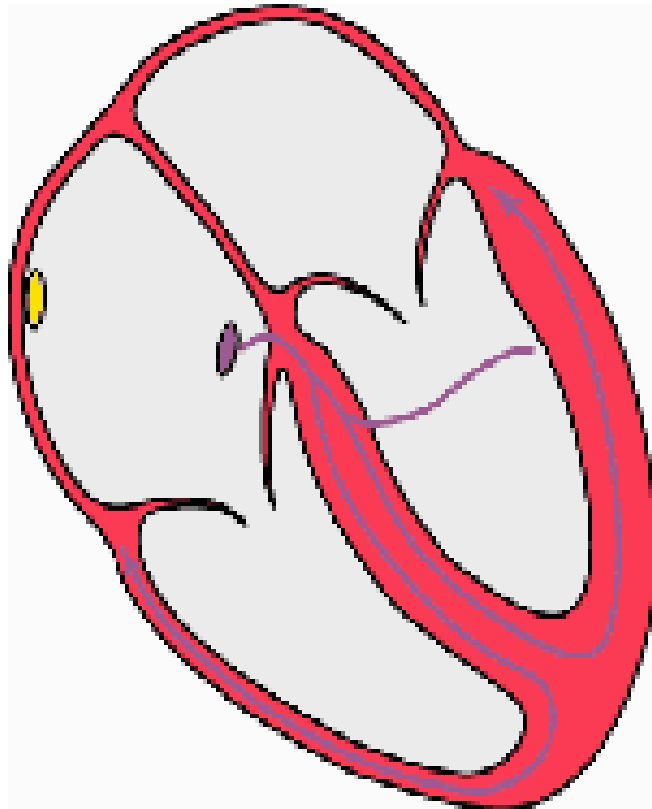
de 0,12 a
0,22 o 0,24 seg.



Onda P

- DESPOL
AURICULAR

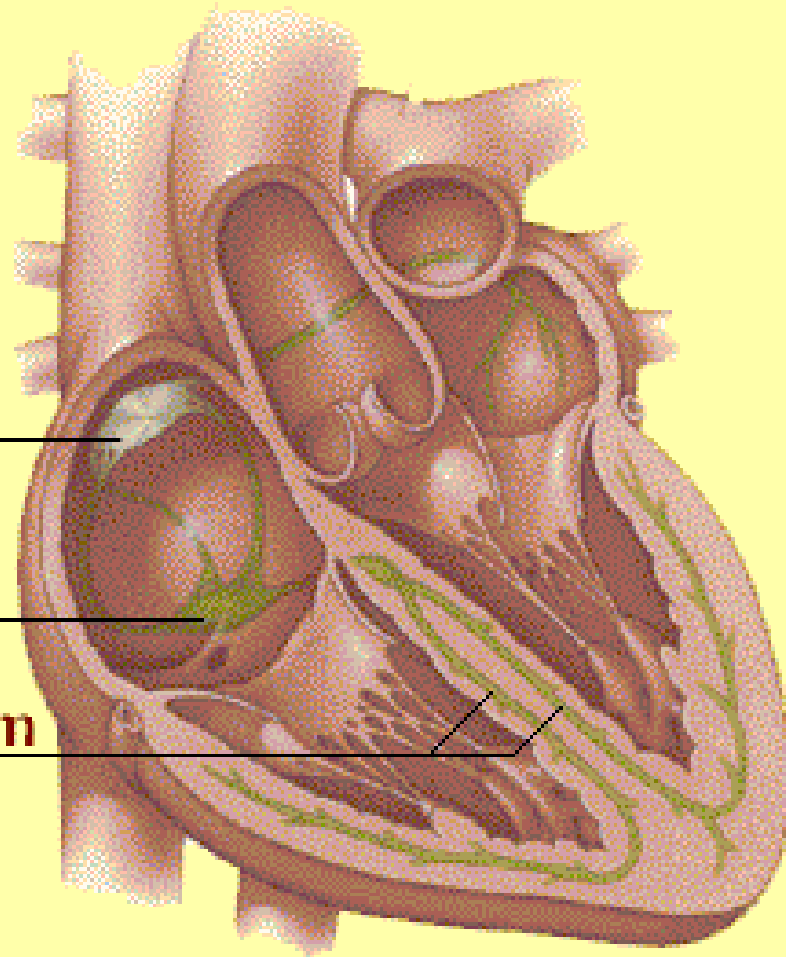


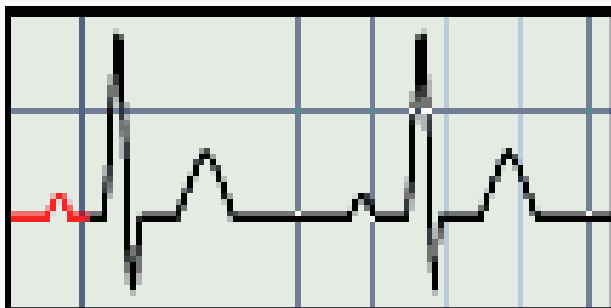
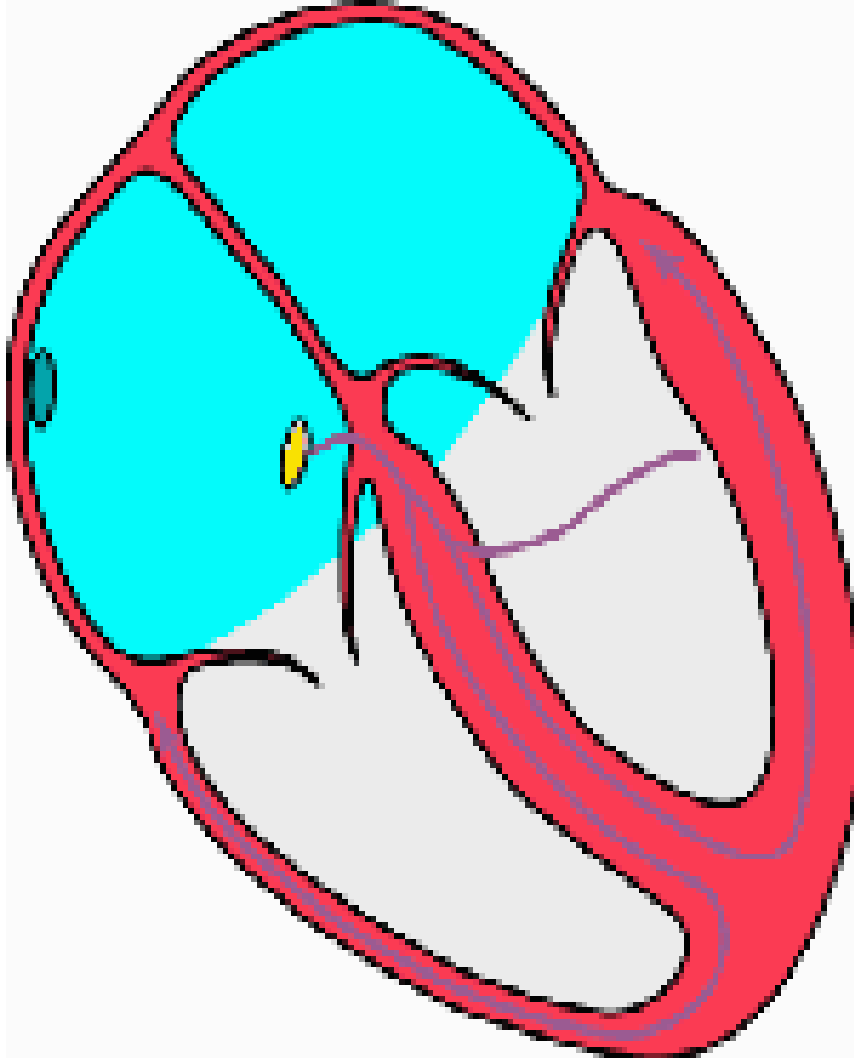


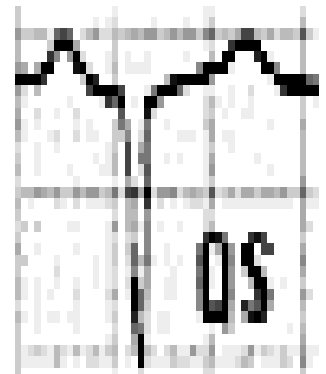
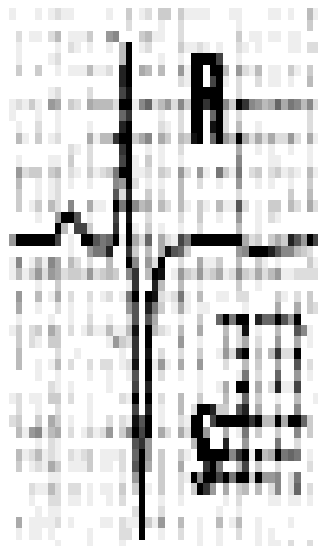
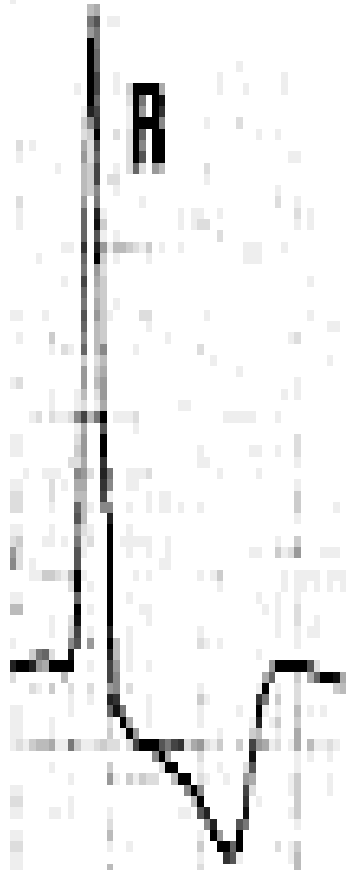
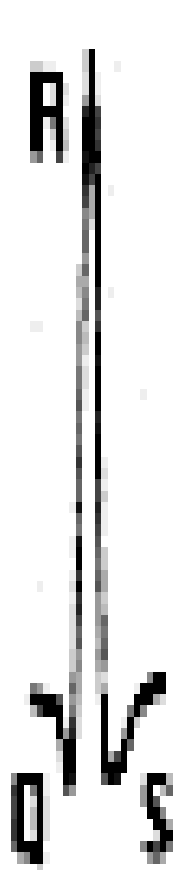
Sinus Node

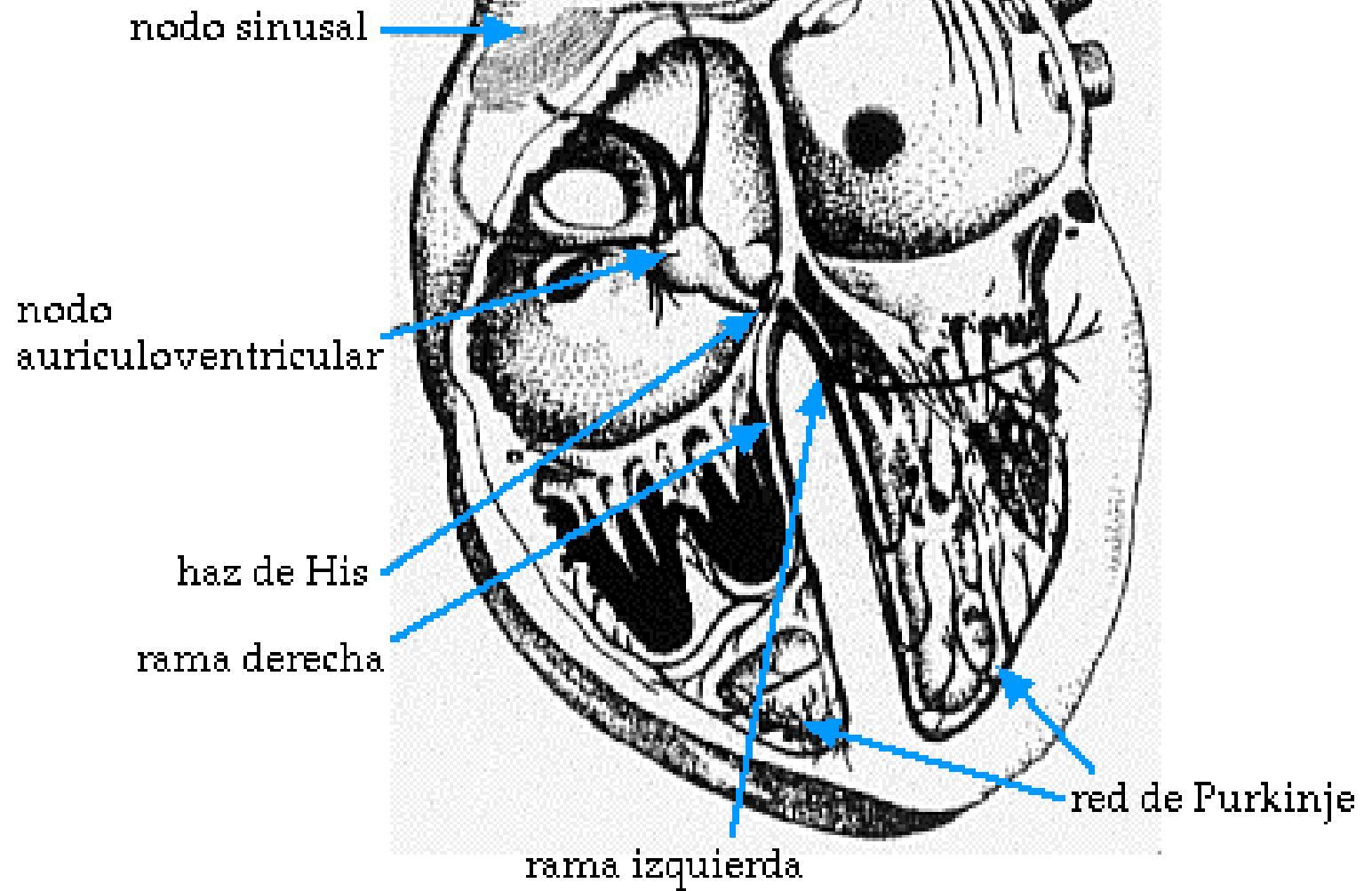
Atrioventricular
Node

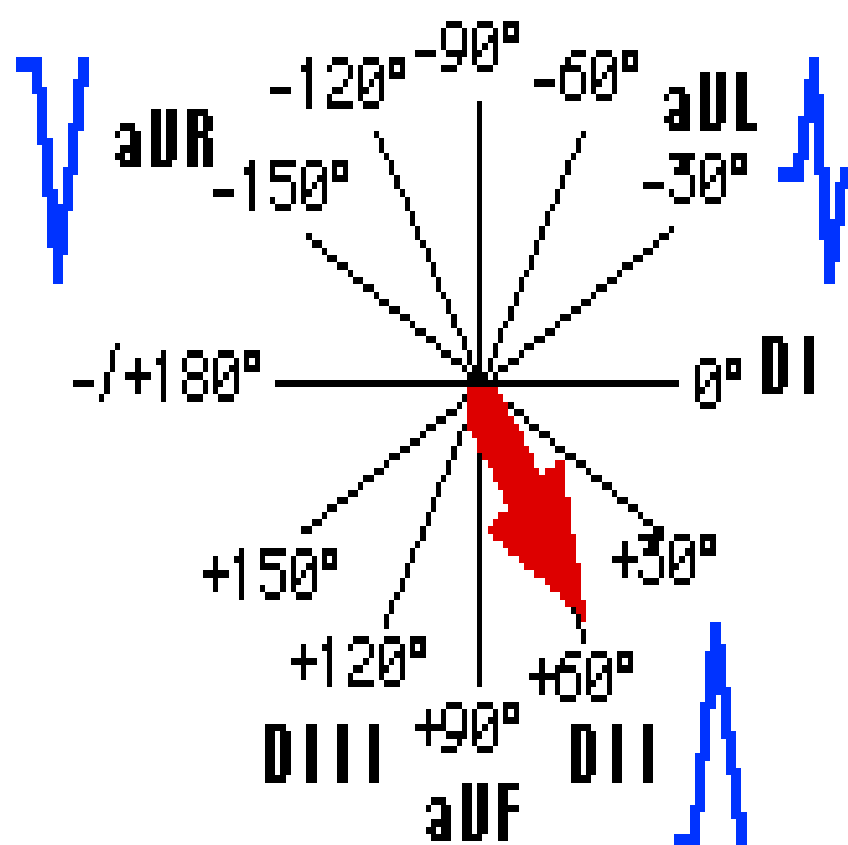
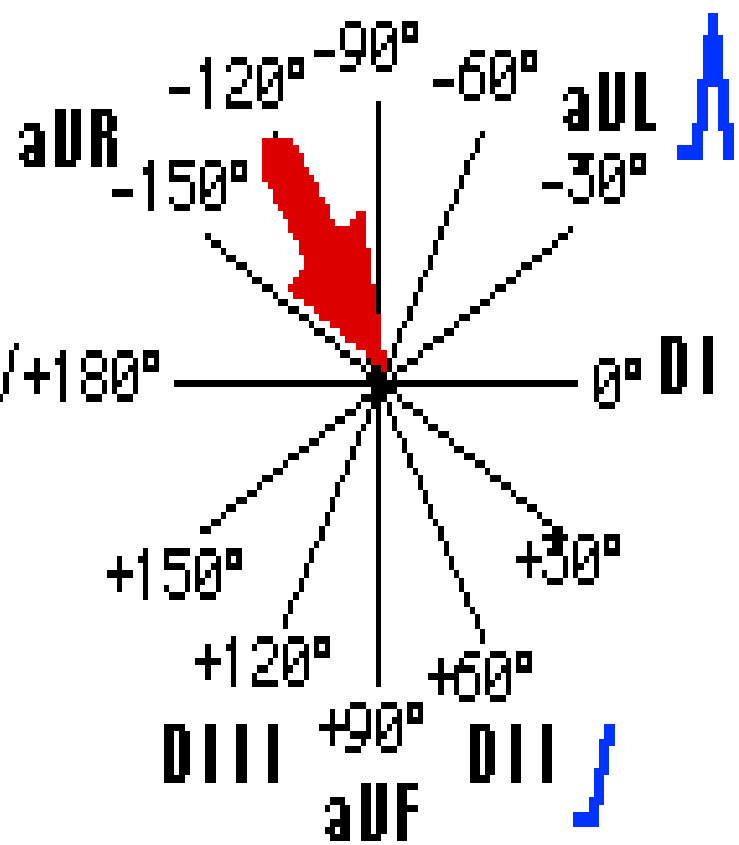
His-Purkinje System

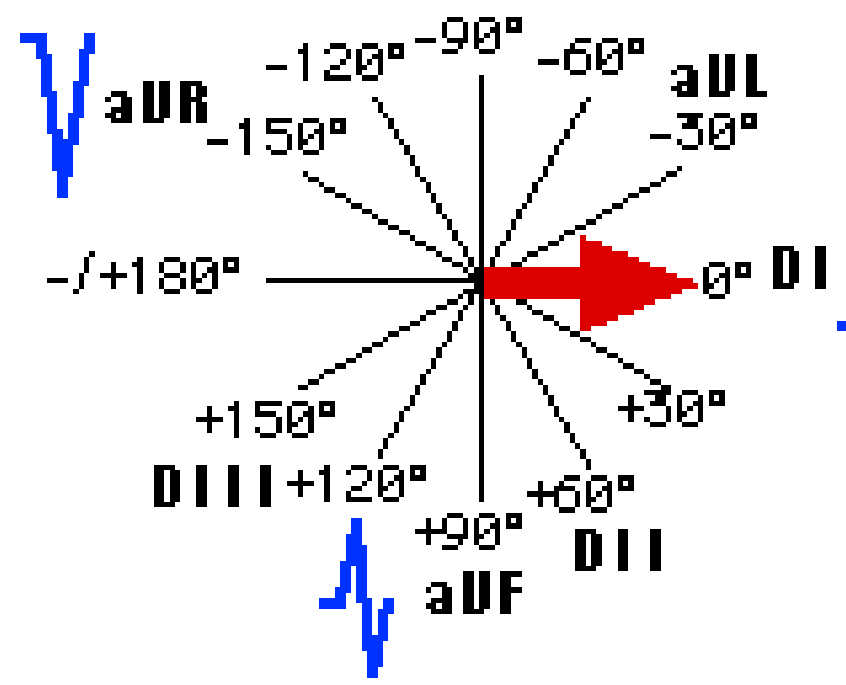
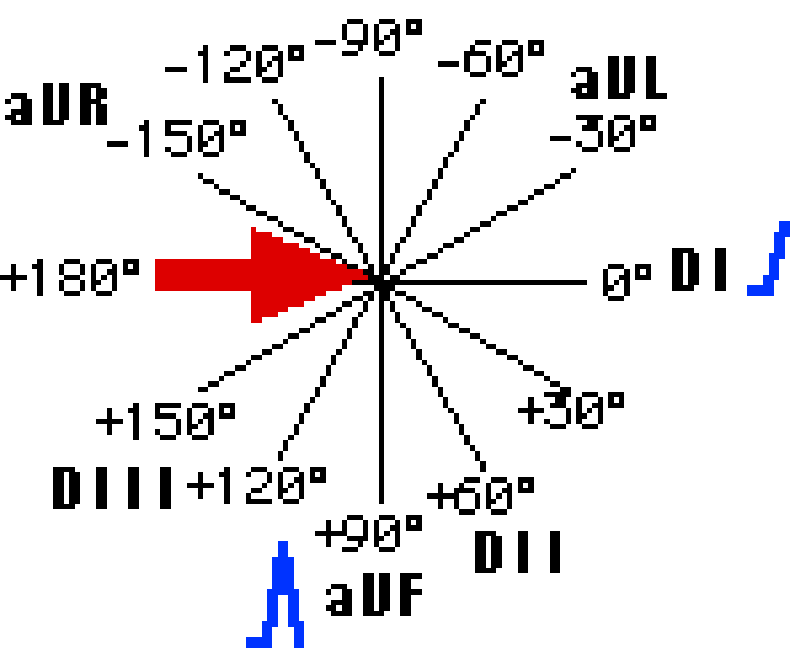


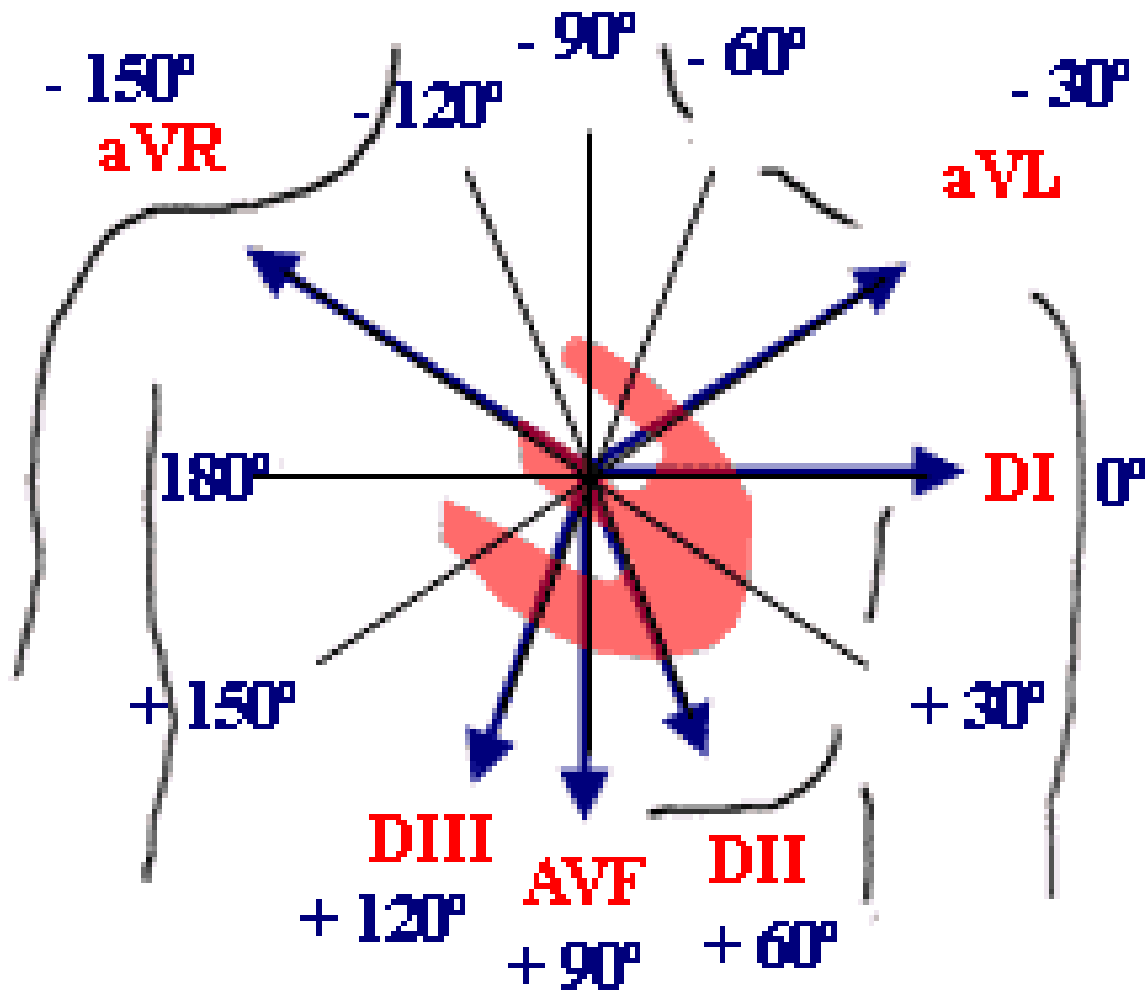






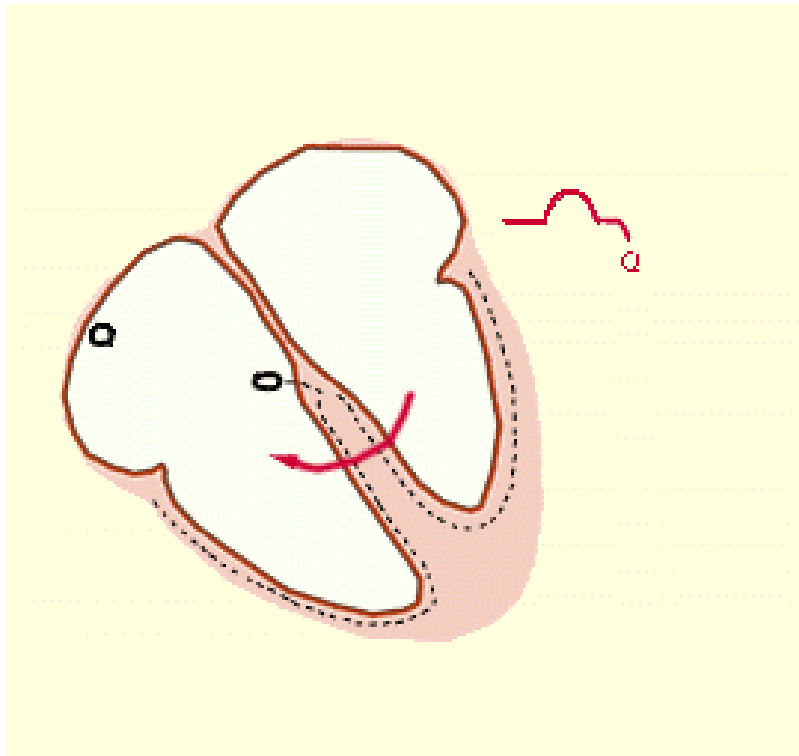


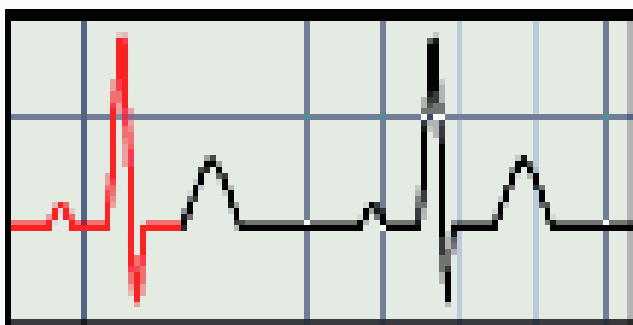
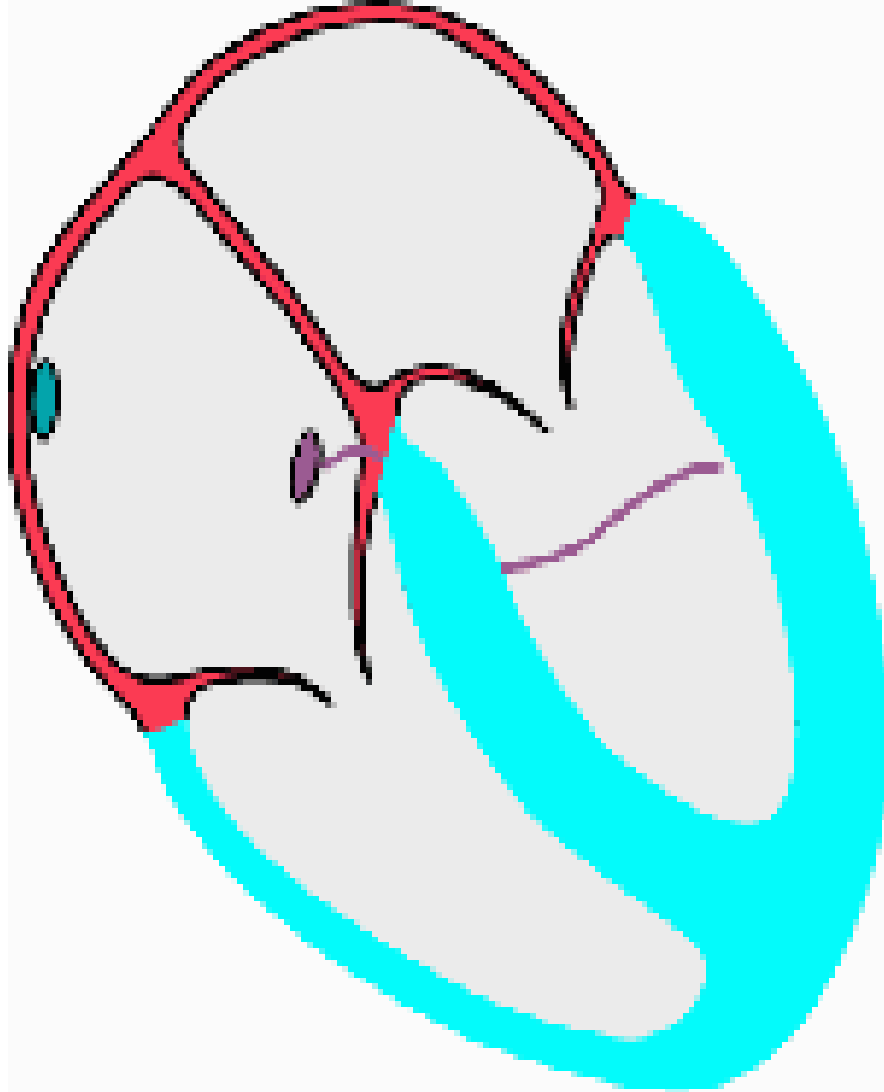




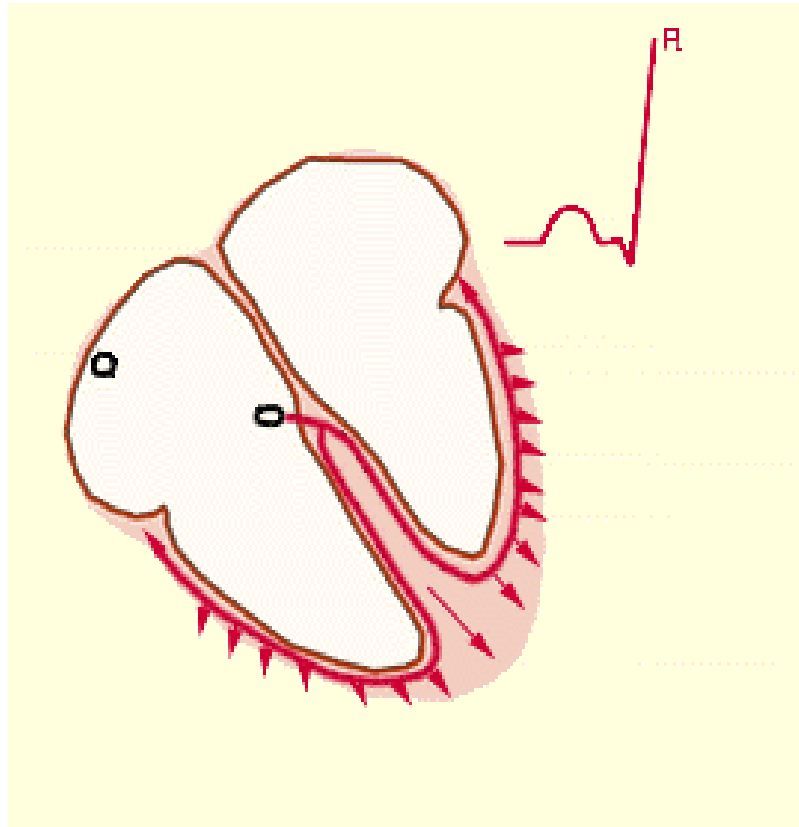
ONDA Q

- DESP SEPTAL

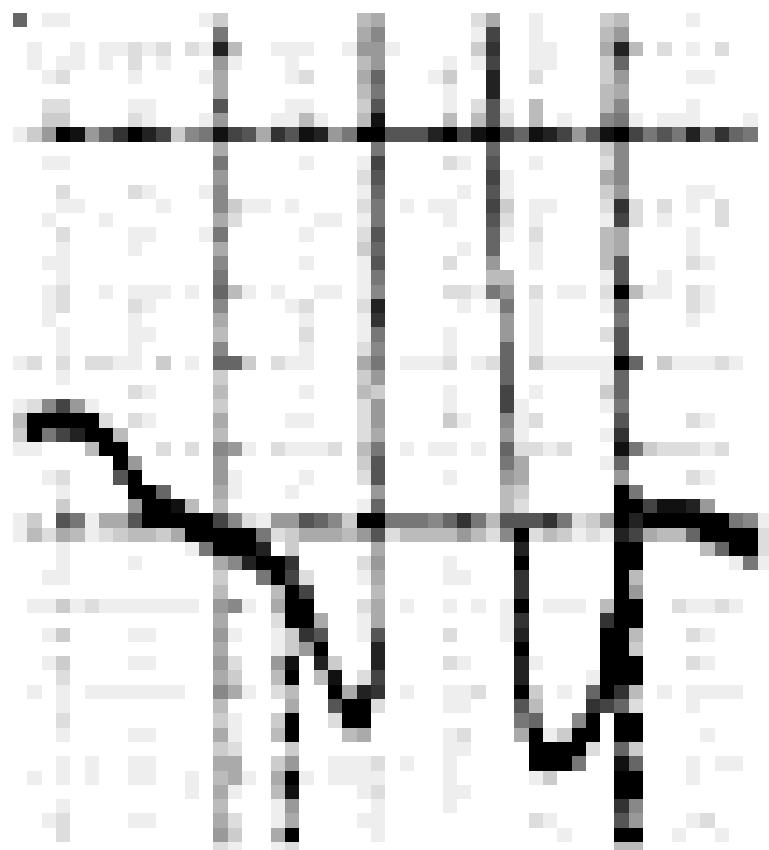




ONDA R



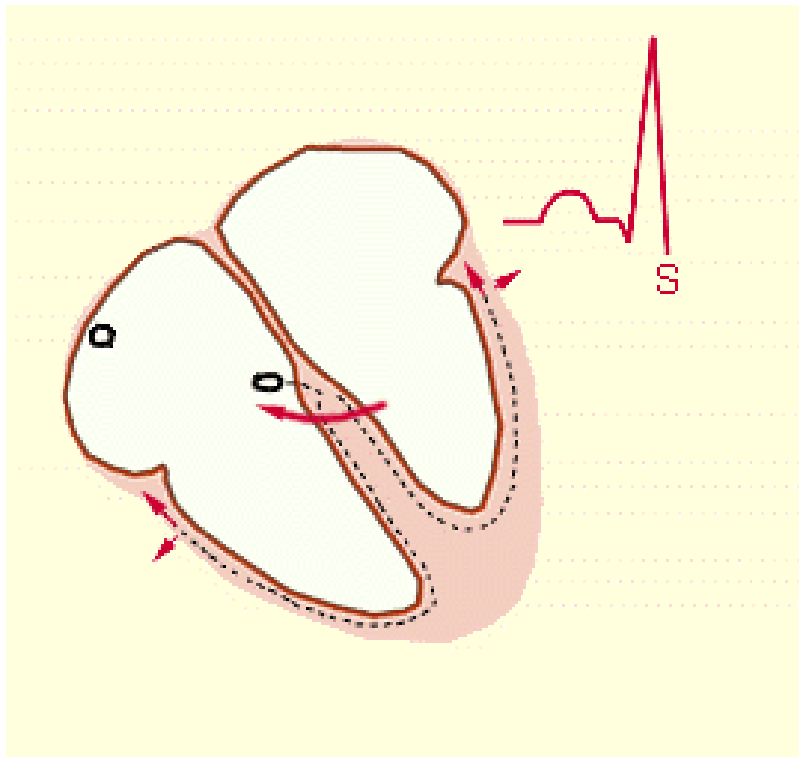
- DESPOL
MIOCARDICA



< 0,12 seg.

ONSA S

- DESPOLARIZACION DE PAREDES LIBRES



ONDA T

- REPOL VENTRICULAR

